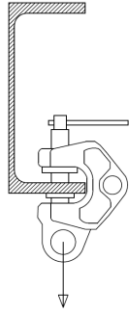


# ALLOWABLE LIFTING LOAD – EAGLE CLAMP IN UPE PROFILES



- This table applies for eagle clamps of type SB
- Max allowable pull angle from vertical is 15° in any direction
- Yield strength for beam profile and plate is assumed to be 235 MPa
- Loads from other equipment is not accounted for; if other loads are significant, the beam must be checked separately
- The clamp is assumed to be fully inserted on to the profile's flange

Revision: 01  
Date: 17.12.2013

Allowable lifting load in kg

UPE PROFILE	BEAM SPAN (M)													
	0.5	1.0	1.5	2.0	2.5	3.0	3.5	4.0	4.5	5.0	5.5	6.0	7.0	8.0
UPE 80	94	94	93	92	91	90	88	87	85	84	82	80	77	74
UPE 100	119	118	117	116	115	114	112	111	109	108	106	104	101	98
UPE 120	146	145	144	143	142	141	140	138	137	135	133	132	128	125
UPE 140	182	181	180	179	178	177	175	174	172	170	168	167	163	159
UPE 160	215	214	212	211	210	208	207	205	203	202	200	198	194	190
UPE 180	259	257	256	255	253	252	250	248	246	244	242	240	236	232
UPE 200	297	296	294	293	291	290	288	286	284	282	280	278	274	269
UPE 220	352	351	349	348	346	344	342	340	338	336	334	331	327	322
UPE 240	388	387	385	384	382	380	378	376	374	372	370	368	363	358
UPE 270	452	451	449	447	446	444	442	440	438	436	433	431	426	421
UPE 300	602	600	598	595	593	590	587	584	581	578	575	572	566	559